



SHUT OFF VALVES,
VIBRATION ELIMINATORS,
ACCUMULATORS & OIL
SEPARATORS

Danfoss Check Valves (Non-return)

Danfoss non-return valves can be used in liquid, suction or hot gas lines in refrigeration and air conditioning systems.

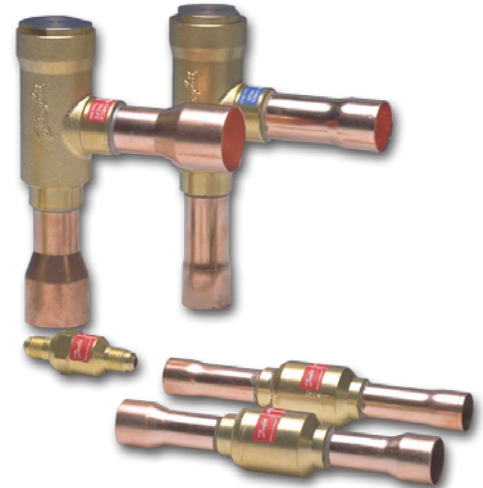
The NRVH models are fitted with a stronger spring for use in discharge lines from compressors connected in parallel.

Straight Way

| CODE | MODEL | CONNECTIONS | DANFOSS NO |
|------|--------|-------------|------------|
| D150 | NRV 6 | 1/4 Flare | 020-1040 |
| D151 | NRV 10 | 3/8 | 020-1041 |
| D152 | NRV 12 | 1/2 | 020-1042 |
| D153 | NRV 16 | 5/8 | 020-1043 |

| CODE | MODEL | CONNECTIONS | DANFOSS NO |
|------|---------|-------------|------------|
| D154 | NRV 6s | 1/4 Solder | 020-1010 |
| D155 | NRV 10s | 3/8 | 020-1011 |
| D156 | NRV 12s | 1/2 | 020-1012 |
| D157 | NRV 16s | 5/8 | 020-1018 |
| D158 | NRV 19s | 3/4 | 020-1019 |

| CODE | MODEL | CONNECTIONS | DANFOSS NO |
|------|----------|-------------|------------|
| D163 | NRVH 22s | 7/8 Solder | 020-1032 |
| D164 | NRVH 28s | 1-1/8 | 020-1033 |
| D165 | NRVH 35s | 1-3/8 | 020-1034 |

Danfoss Hand Wheel Shut Off Valves

| CODE | MODEL | CONNECTIONS |
|------|--------|-------------|
| D463 | BML-6 | 1/4 Flare |
| D465 | BML-10 | 3/8 |
| D466 | BML-12 | 1/2 |
| D467 | BML-15 | 5/8 |

| CODE | MODEL | CONNECTIONS |
|------|---------|-------------|
| D464 | BML-06S | 1/4 Solder |
| D470 | BML-10S | 3/8 |
| D471 | BML-12S | 1/2 |
| D472 | BML-15S | 5/8 |
| D473 | BML-18S | 3/4 |
| D474 | BML-22S | 7/8 |



Hand Wheel Shut Off Valves

Quality forged brass shut off valves from Castel with hand wheel. Available in both flare and solder versions.

| CODE | MODEL | CONNECTIONS |
|------|---------|-------------|
| D005 | HVF2-4 | 1/4 Flare |
| D006 | HVF2-6 | 3/8 |
| D007 | HVF2-8 | 1/2 |
| D008 | HVF2-10 | 5/8 |
| D009 | HVF2-12 | 3/4 |

| CODE | MODEL | CONNECTIONS |
|------|---------|-------------|
| D015 | HVS2-4 | 1/4 Solder |
| D016 | HVS2-6 | 3/8 |
| D017 | HVS2-8 | 1/2 |
| D018 | HVS2-10 | 5/8 |




Capped Shut Off Valves

Quality capped forged brass shut off valves from Castel.
Available in both flare and solder versions.

| CODE | MODEL | CONNECTIONS |
|------|---------|-------------|
| D030 | CVF2-4 | 1/4 Flare |
| D031 | CVF2-6 | 3/8 |
| D032 | CVF2-8 | 1/2 |
| D033 | CVF2-10 | 5/8 |
| D034 | CVF2-12 | 3/4 |

These Castel shut off valves feature plastic caps on the flare versions and brass caps on the solder versions below.

| CODE | MODEL | CONNECTIONS |
|------|---------|-------------|
| D040 | CVS2-4 | 1/4 Solder |
| D041 | CVS2-6 | 3/8 |
| D042 | CVS2-8 | 1/2 |
| D043 | CVS2-10 | 5/8 |
| D044 | CVS2-12 | 3/4 |
| D045 | ILV-2 | 7/8 |
| D046 | ILV-2 | 1-1/8 |
| D047 | ILV-2 | 1-3/8 |
| D048 | ILV-2 | 1-5/8 |
| D049 | ILV-2 | 2-1/8 |



Vibration Eliminators

Vibration eliminators are designed to reduce compressor vibration, and can be fitted in both the suction and discharge lines.

| CODE | MODEL | SIZE |
|------|--------|-------|
| D201 | VAF-3 | 3/8 |
| D202 | VAF-4 | 1/2 |
| D203 | VAF-5 | 5/8 |
| D204 | VAF-6 | 3/4 |
| D205 | VAF-8 | 7/8 |
| D206 | VAF-9 | 1-1/8 |
| D207 | VAF-10 | 1-3/8 |
| D208 | VAF-11 | 1-5/8 |
| D209 | VAF-82 | 2-1/8 |
| D210 | VAF-83 | 2-5/8 |
| D211 | VAF-84 | 3-1/8 |
| D212 | VAF-85 | 3-5/8 |
| D213 | VAF-86 | 4-1/8 |

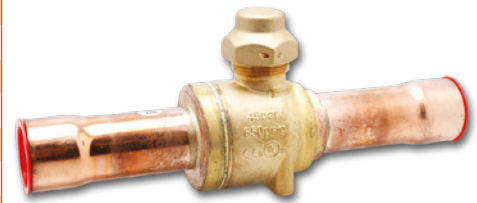


Danfoss Ball Valves

GBC ball valves are manually operated shut-off valves suitable for applications where bi-directional flow is a requirement. GBC valves are approved for applications in liquid, suction, and hot gas lines in refrigeration and air conditioning systems.



| CODE | MODEL | CONNECTIONS |
|------|-----------|-------------|
| D061 | GBC - 6S | 1/4 Solder |
| D062 | GBC - 10S | 3/8 |
| D063 | GBC - 12S | 1/2 |
| D064 | GBC - 16S | 5/8 |
| D065 | GBC - 18S | 3/4 |
| D066 | GBC - 22S | 7/8 |
| D067 | GBC - 28S | 1-1/8 |
| D068 | GBC - 35S | 1-3/8 |
| D069 | GBC - 42S | 1-5/8 |
| D070 | GBC - 54S | 2-1/8 |
| D071 | GBC - 67S | 2-5/8 |
| D072 | GBC - 79S | 3-1/8 |



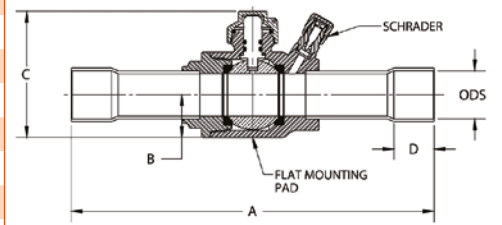
Please note that GBC ball valves with schrader fittings are also available to order.

Henry Ball Valves (60bar MWP)

| CODE | MODEL | CONNECTIONS |
|------|--------|-------------|
| D105 | 907203 | 3/8 Solder |
| D106 | 907204 | 1/2 |
| D107 | 907205 | 5/8 |
| D108 | 907306 | 3/4 |
| D109 | 907307 | 7/8 |
| D110 | 907409 | 1-1/8 |
| D111 | 908511 | 1-3/8 |
| D112 | 908613 | 1-5/8 |
| D113 | 908617 | 2-1/8 |



| CODE | MODEL | CONNECTIONS |
|------|-------------------|-------------|
| D115 | 937203 + Schrader | 3/8 Solder |
| D116 | 937204 + Schrader | 1/2 |
| D117 | 937205 + Schrader | 5/8 |
| D118 | 937306 + Schrader | 3/4 |
| D119 | 937307 + Schrader | 7/8 |
| D129 | 937409 + Schrader | 1-1/8 |
| D134 | 938511 + Schrader | 1-3/8 |
| D128 | 938613 + Schrader | 1-5/8 |
| D114 | 937721 + Schrader | 2-5/8 |



Henry Check Valves

Henry check valves come in two styles, either conventional ODF sockets or with copper extensions.



Straight Way

| CODE | MODEL | CONNECTIONS |
|------|--------|-------------|
| D130 | NRV-14 | 7/8 Solder |
| D131 | NRV-18 | 1-1/8 |
| D132 | NRV-22 | 1-3/8 |
| D133 | NRV-26 | 1-5/8 |



Extended

| CODE | MODEL | CONNECTIONS |
|------|---------|--------------|
| D135 | NRV-14E | 7/8 Extended |
| D136 | NRV-18E | 1-1/8 |
| D137 | NRV-22E | 1-3/8 |
| D138 | NRV-26E | 1-5/8 |



Henry High Pressure Ball Valves (130bar MWP)

| CODE | MODEL | CONNECTIONS |
|------|----------|-------------|
| D190 | 907202TH | 1/4 Solder |
| D191 | 907203TH | 3/8 |
| D192 | 907204TH | 1/2 |
| D193 | 907205TH | 5/8 |
| D194 | 907306TH | 3/4 |
| D195 | 907307TH | 7/8 |
| D196 | 907409TH | 1-1/8 |
| D197 | 907511TH | 1-3/8 |
| D198 | 907613TH | 1-5/8 |

| CODE | MODEL | CONNECTIONS |
|-------|---------------------|-------------|
| D1911 | 937202TH + Schrader | 1/4 Solder |
| D1912 | 937203TH + Schrader | 3/8 |
| D1913 | 937204TH + Schrader | 1/2 |
| D1914 | 937205TH + Schrader | 5/8 |
| D1915 | 937306TH + Schrader | 3/4 |
| D1916 | 937307TH + Schrader | 7/8 |
| D1917 | 937409TH + Schrader | 1-1/8 |
| D1918 | 937511TH + Schrader | 1-3/8 |
| D1919 | 937613TH + Schrader | 1-5/8 |



Henry Pressure Relief Valves

| CODE | MODEL | INLET | OUTLET |
|---------|-------|----------------|------------|
| D450(+) | 5230A | 1/4" MPT Inlet | 1/2" Flare |
| D451(+) | 5231A | 3/8" MPT | 1/2" Flare |
| D452(+) | 5232A | 1/2" MPT | 3/4" Flare |
| D453(+) | 5231B | 1/2" MPT | 5/8" Flare |

Catalogue numbers indicate size of Pressure Relief Valve only. Please specify pressure setting when ordering. Standard settings are shown in table below. Others settings available, ask for details.

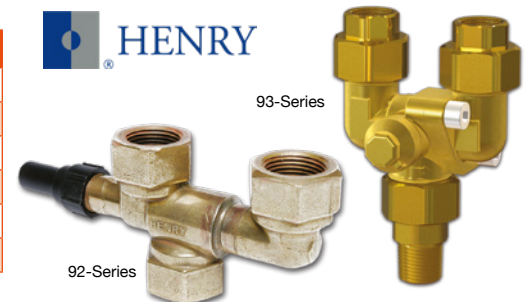
| | | |
|-------|----------|---------|
| (+) R | 14.0 Bar | 206 psi |
| (+) S | 16.2 Bar | 238 psi |
| (+) T | 24.8 Bar | 365 psi |
| (+) W | 20.7 Bar | 300 psi |
| (+) X | 24.1 Bar | 350 psi |
| (+) Y | 27.6 Bar | 400 psi |
| (+) Z | 31.0 Bar | 450 psi |



Henry 3 Way Dual Shut Off Valves

| CODE | MODEL | INLET | OUTLET | K _{vs} (M ³ /h) |
|------|-------|-------------------|-----------|-------------------------------------|
| D459 | 923 | 3/8" FPT | 3/8" FPT | 2.80 |
| D460 | 925 | 1/2" FPT | 1/2" FPT | 2.83 |
| D220 | 933 | 3/8" FPT | 3/8" FPT* | 3.68 |
| D221 | 933M | 3/8" MPT ROTALOCK | 3/8" FPT* | 3.68 |
| D223 | 935 | 1/2" FPT | 1/2" FPT* | 4.82 |
| D224 | 935M | 1/2" MPT ROTALOCK | 1/2" FPT* | 4.82 |

*Available as Rotalock - add 'R' to model number



Castel Safety Valves

The 3060/45C Pressure Relief Valves are all identical apart from the release pressures. Choose from 14.0, 24.8, 25.9 or 27.5 bar models.

| CODE | MODEL | SIZE | TYPE |
|------|-------------|------------------|-----------------|
| D477 | 3060/45C14 | 1/2 NPT x 5/8 FL | 14.0 Bar Angled |
| D478 | 3060/45C248 | 1/2 NPT x 5/8 FL | 24.8 Bar Angled |
| D475 | 3060/45C259 | 1/2 NPT x 5/8 FL | 25.9 Bar Angled |
| D476 | 3060/45C275 | 1/2 NPT x 5/8 FL | 27.5 Bar Angled |

Valves series 3060 are safety devices according to the definition given in Article 1, Point 2.1.3, 2nd dash of 97/23/ EC Directive and are the subject of Article 3, Point 1.4 of aforesaid Directive.



Liquid Receivers



Vertical Liquid Receivers

A range of vertical liquid receivers from GVN, excluding rotolock valves.

| CODE | MODEL | VOLUME LITRES | INLET SOLDER CONN. | OUTLET R/LOCK CONN. | NPT CONN. | SIGHT GLASS |
|------|-------------------------|---------------|--------------------|---------------------|-----------|-------------|
| D500 | VLR.A.33b.02.B1.A2 | 2 | 1/4 | 1" | No | No |
| D501 | VLR.A.33b.04.B2.A2 | 4 | 3/8 | 1" | No | No |
| D502 | VLR.A.33b.06.B3.A2 | 6 | 1/2 | 1" | No | No |
| D503 | VLR.A.33b.09.B3.A2 | 9 | 1/2 | 1" | No | No |
| D504 | VLR.A.33b.10.B4.A2 | 10 | 5/8 | 1" | No | No |
| D505 | VLR.A.33b.12.B4.A2.F4 | 12 | 5/8 | 1" | No | No |
| D506 | V7A.33b.25.B6.A3.F4.H20 | 25 | 7/8 | 1-1/4" | 1/2" | No |

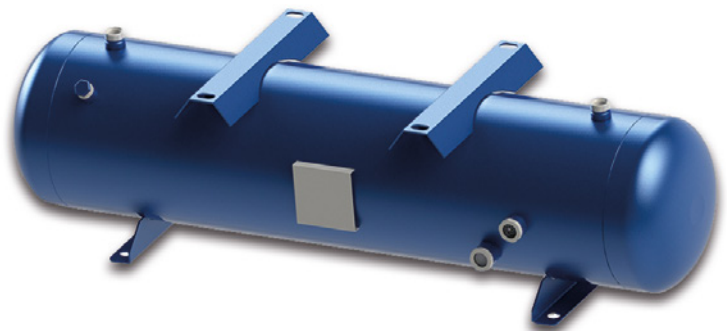
Horizontal Liquid Receivers

A range of horizontal liquid receivers from GVN, excluding rotolock valves.

| CODE | MODEL | VOLUME LITRES | INLET R/LOCK CONN. | OUTLET R/LOCK CONN. | NPT CONN. | SIGHT GLASS |
|------|--------------------------|---------------|--------------------|---------------------|-----------|-------------|
| D535 | HC7.33b.40.A3.A3.F4.H1 | 40 | 1-1/4" | 1-1/4" | 1/2" | Yes |
| D536 | H8BC.33b.60.A4.A4.F4.H2 | 60 | 1-3/4" | 1-3/4" | 1/2" | Yes |
| D537 | H8BC.33b.80.A4.A4.F4.H2 | 80 | 1-3/4" | 1-3/4" | 1/2" | Yes |
| D538 | H8BC.33b.107.A4.A4.F4.H2 | 107 | 1-3/4" | 1-3/4" | 1/2" | Yes |



Please Note:
Vertical Receiver Mounting Plate option may differ from Image shown.



Rotolock Valves

A range of rotolock valves to suit both horizontal and vertical GVN liquid receivers listed above. These are industry standard rotolock valves so suitable as service replacement valve.

| CODE | MODEL | ROTOLOCK CONNECTION | SOLDER CONNECTION | TO SUIT GVN RECEIVER MODEL |
|------|----------|---------------------|-------------------|--|
| D512 | RV-1/4 | 1" | 1/4 | VLR.A.33b.02.B1.C1 |
| D513 | RV-3/8 | 1" | 3/8 | VLR.A.33b.04.B2.C2 |
| D514 | RV-1/2 | 1" | 1/2 | VLR.A.33b.06.B3.C3 VLR.A.33b.09.B3.C3 |
| D515 | RV-5/8 | 1" | 5/8 | VLR.A.33b.10.B4.C4 VLR.A.33b.12.B4.C4.F4 |
| D516 | RV-5/8 | 1-1/4" | 5/8 | V7A.33b.25.B6.C6.F4.H20 HC7.33b.40.A3.A3.F4.H1 |
| D517 | RV-7/8 | 1-1/4" | 7/8 | V7A.33b.25.B6.C6.F4.H20 HC7.33b.40.A3.A3.F4.H1 |
| D518 | RV-1-1/8 | 1-3/4" | 1-1/8 | H8BC.33b.60.A4.A4.F4.H2 H8BC.33b.80.A4.A4.F4.H2 H8BC.33b.107.A4.A4.F4.H2 |
| D520 | RV-1-3/8 | 1-3/4" | 1-3/8 | H8BC.33b.60.A4.A4.F4.H2 H8BC.33b.80.A4.A4.F4.H2 H8BC.33b.107.A4.A4.F4.H2 |
| D511 | RV-1-5/8 | 1-3/4" | 1-5/8 | H8BC.33b.60.A4.A4.F4.H2 H8BC.33b.80.A4.A4.F4.H2 H8BC.33b.107.A4.A4.F4.H2 |

AC & R Vertical Suction Accumulators

Compressors are designed to compress vapour not liquid. The purpose of the accumulator is to hold excess liquid and return it to the compressor as a vapour that is safe for the compressor to handle.



| CODE | MODEL | CONNECTIONS | SIZE MM |
|------|----------|-------------|---------------|
| D600 | S-7044 | 1/2 | 264 H x 102 Ø |
| D601 | S-7045 | 5/8 | 264 H x 102 Ø |
| D602 | S-7046 | 3/4 | 264 H x 102 Ø |
| D603 | S-7057CE | 7/8 | 330 H x 127 Ø |
| D604 | S-7061CE | 1-1/8 | 381 H x 152 Ø |
| D605 | S-7063CE | 1-3/8 | 630 H x 152 Ø |
| D606 | S-7065CE | 1-5/8 | 630 H x 152 Ø |
| D607 | S-7721CE | 2-1/8 | 588 H x 219 Ø |
| D608 | S-7725CE | 2-5/8 | 578 H x 273 Ø |



Helical Oil Separators

The AC & R Helical Oil Separator features a centrifugal flow path achieving approximately 99 percent efficiency of oil separation with a low pressure drop.

Oil separators should be selected on capacity not connection size. Oil Return = 3/8" flare.



| CODE | MODEL | CONNECTIONS |
|------|--------|-------------|
| D380 | S-5180 | 1/4 |
| D381 | S-5181 | 3/8 |
| D382 | S-5182 | 1/2 |
| D383 | S-5185 | 5/8 |
| D384 | S-5187 | 7/8 |
| D385 | S-5188 | 1-1/8 |
| D386 | S-5190 | 1-3/8 |
| D387 | S-5192 | 1-5/8 |



Oil Separator Heater

| CODE | MODEL | |
|------|--------|-------------------|
| D388 | S-9111 | 220 Volt 44" Dia. |

Oil Separator Capacities

| MODEL | R134A | | R22 | | R404A | |
|--------|-------|-------|-------|-------|-------|-------|
| | -40°C | +5°C | -40°C | +5°C | -40°C | +5°C |
| S-5180 | 1.76 | 2.64 | 2.64 | 3.52 | 2.64 | 3.52 |
| S-5181 | 2.64 | 3.52 | 3.52 | 5.27 | 3.52 | 5.27 |
| S-5182 | 3.52 | 5.27 | 5.27 | 7.03 | 5.27 | 7.03 |
| S-5185 | 10.55 | 14.06 | 15.82 | 19.34 | 14.06 | 19.34 |
| S-5187 | 15.82 | 19.34 | 24.61 | 28.13 | 22.85 | 29.89 |
| S-5188 | 21.09 | 26.37 | 31.64 | 36.92 | 29.88 | 38.67 |
| S-5190 | 28.13 | 35.16 | 45.71 | 49.22 | 42.19 | 52.74 |
| S-5192 | 38.68 | 45.71 | 56.25 | 63.29 | 52.74 | 66.80 |

The above capacities are given in kilowatts at the indicated temperature.



Flexible Hoses

Cut to length flexible refrigerant hose, perfect for transport refrigeration and mobile air conditioning, also perfect for integral cabinets with pull out condensing units.

Synthetic rubber inner tube covered with a nylon layer and reinforced with two polyester spirals.

Maximum working pressure 350 p.s.i.

Minimum bursting pressure 1750 p.s.i

Suitable for HFC, CFC and HCFC.

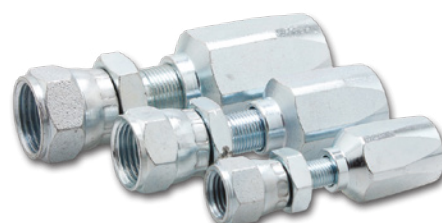
Hose per metre

| CODE | MODEL | SIZE INCH |
|------|---------|-----------|
| D260 | 3056-04 | 1/4 |
| D261 | 3055-06 | 3/8 |
| D262 | 3055-08 | 1/2 |
| D263 | 3055-10 | 5/8 |



Straight Union - Female Flare

| CODE | MODEL | SIZE INCH |
|------|------------|-----------|
| D265 | 5704-04-04 | 1/4 |
| D267 | 5706-06-06 | 3/8 |
| D269 | 5704-08-08 | 1/2 |
| D271 | 5704-10-10 | 5/8 |



90° Degree Elbow - Female Flare

| CODE | MODEL | SIZE INCH |
|------|------------|-----------|
| D273 | 5709-04-04 | 1/4 |
| D274 | 5710-06-06 | 3/8 |
| D275 | 5709-08-08 | 1/2 |
| D276 | 5709-10-10 | 5/8 |



*End fittings can be fitted using ordinary hand tools.



Burgaflex