

## DEFROST HEATERS & CONDENSERS

---



**G**  
SECTION

## Defrost Heaters

These heaters are 230 volt, 50Hz and are supplied straight, they can be bent by hand to the required shape.

All heaters are supplied with cable tails.

CODE	LENGTH	WATTS
G350	24"	400
G352	36"	500
G353	36"	750
G355	42"	500
G359	48"	750
G363	60"	500
G365	60"	1000
G368	72"	500
G369	72"	1000
G371	84"	500
G372	84"	1000
G375	96"	500
G376	96"	1000
G380	120"	1000
G381	120"	1500
G383	130"	1500



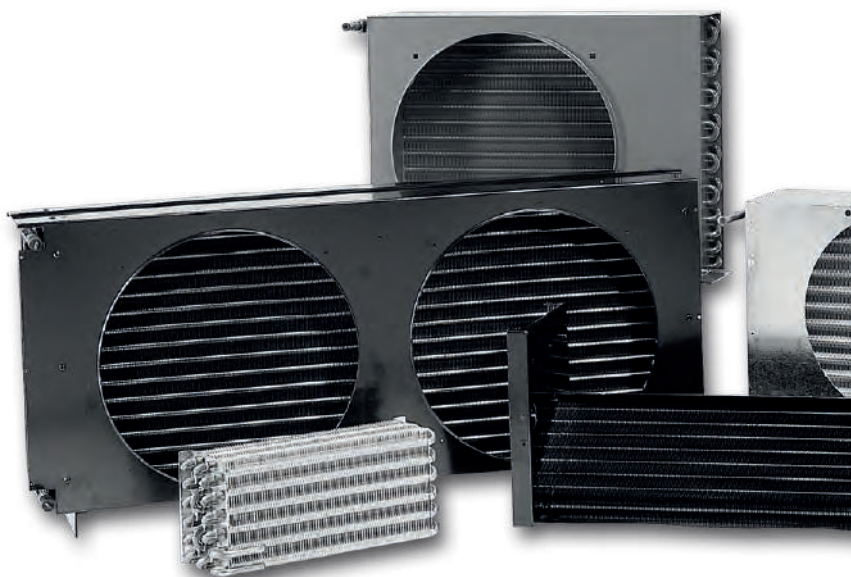
### Heater in Series

230 volt heater wired in series or on a 110 volt supply give approximately 22% of their rated output.  
I.E. 2 x 1000 watt 230 volt heaters, wired in series would have output of 220 watt each.

## Condensers

These highly efficient air cooled condensers for Hermetic Compressors are manufactured with staggered copper tubes and aluminium fins with self-separating collars give 4mm fin spacing.

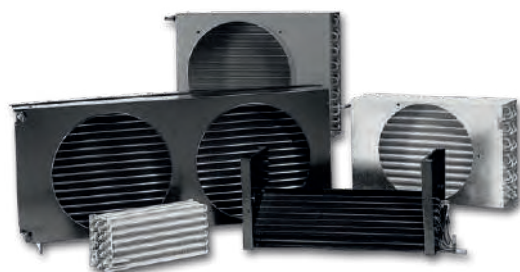
CODE	MODEL
G281	NCF 72
G282	NCF 82
G283	NCF 83
G284	NCF 84
G285	NCF 93
G286	NCF 94
G287	NCF 104
G288	NCF 114
G289	NCF 124
G290	NCF 144
G291	NCF 94D
G292	NCF 104D
G293	NCF 114D
G294	NCF 124D
G295	NCF 144D



### Specification:

SINGLE FAN MODELS	NCF 72	NCF 82	NCF 83	NCF 84	NCF 93	NCF 94	NCF 104	NCF 114	NCF 124	NCF 144
No. of Tubes	7x2	8x2	8x3	8x4	9x3	9x4	10x4	11x4	12x4	14x4
Capacity*	732	907	1291	1605	1628	2047	2512	3058	3663	4942
Fan Blade Dia.	203	203	203	203	254	254	254	305	305	356
Fan Motor Size	5	5	5	5	10	10	10	16	16	35
Volume Cu m/hr	650	650	650	650	590	850	850	1400	1400	1900
Height (mm)	235	235	235	235	275	275	290	325	350	400
Width (mm)	270	290	290	290	320	320	350	380	410	470
Depth (mm)	107	107	137	167	137	167	167	167	167	167

DOUBLE FAN MODELS	NCF 94D	NCF 104D	NCF 114D	NCF 124D	NCF 144D
No. of Tubes	9x4	10x4	11x4	12x4	14x4
Capacity*	4093	5024	6117	7327	9885
Fan Blade Dia.	2x254	2x254	2x305	2x305	2x356
Fan Motor Size	2x10	2x10	2x16	2x16	2x35
Volume Cu m/hr	1700	1700	2800	2800	3800
Height (mm)	275	290	235	350	400
Width (mm)	590	650	710	770	890
Depth (mm)	167	167	167	167	167



The capacity is the total heat of rejection in watts at 15°KTD. Compressor duty will need to be corrected to obtain the total heat rejection.



# Kelvion

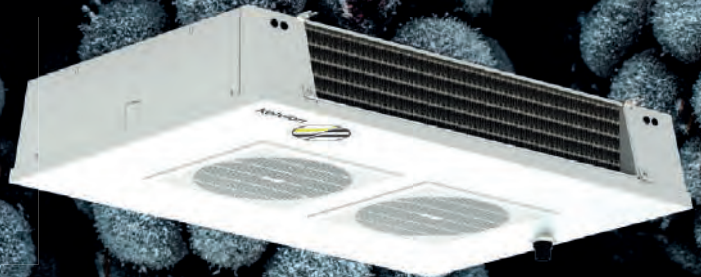


Follow us on:



[www.kelvion.com](http://www.kelvion.com)

## TAKING HEAT OFF AROUND THE WORLD



Our range of refrigeration products are versatile and efficient.

We have a comprehensive range of commercial evaporators as well as many options available on our customised range of heavy commercial and industrial evaporators.

This year we celebrate 100 years of manufacturing at our Fareham site. Kelvion manufacturing in the UK since 1921.



[www.kelvion.com](http://www.kelvion.com)