



CONDENSATE PUMPS,
WATER TUBES, FITTINGS
& PVC HOSES



N
SECTION

Aspen Condensate Pumps

Mini Aqua

The worlds slimmest condensate removal pump is designed to fit where others can't! Perfect for installing directly inside the unit.

CODE	MODEL
N623	Aspen Mini Aqua Pump

Mini Aqua Pump Specification					
Max Flow	L/h @ Max Rec Head	Suction Max Lift	Sound Level @ 1m	Supply Voltage	Max Unit Output
12 L/h @ 0 Head	6L/h @ 10m Head	2m	21 dB(A)	230VAC 0.1A, 16W 50/60Hz	16kW



Silent+ Mini Aqua

Combining Silent+ technology and the slimmest mini pump on the market, the Silent+ Mini Aqua leads the way in innovation.

CODE	MODEL
N640	Aspen Silent+ Mini Aqua Pump

Silent+ Mini Aqua Pump Specification					
Max Flow	L/h @ Max Rec Head	Suction Max Lift	Sound Level @ 1m	Supply Voltage	Max Unit Output
12 L/h @ 0 Head	6L/h @ 10m Head	2m	19 dB(A)	230VAC 0.1A, 16W 50/60Hz	16kW



Mini Orange

The world's best selling mini pump offers unrivalled reliability and performance.

CODE	MODEL
N619	Aspen Mini Orange Pump

Mini Orange Pump Specification					
Max Flow	L/h @ Max Rec Head	Suction Max Lift	Sound Level @ 1m	Supply Voltage	Max Unit Output
12 L/h @ 0 Head	6L/h @ 10m Head	2m	21 dB(A)	230VAC 0.11A, 16W 50/60Hz	16kW



Silent+ Mini Orange

The world's N° 1 mini pump becomes the quietest in its class. Featuring an acoustic damper, the Silent+ Mini Orange is whisper quiet.

CODE	MODEL
N642	Aspen Silent+ Mini Orange Pump

Silent+ Mini Orange Pump Specification					
Max Flow	L/h @ Max Rec Head	Suction Max Lift	Sound Level @ 1m	Supply Voltage	Max Unit Output
12 L/h @ 0 Head	6L/h @ 10m Head	2m	19 dB(A)	230VAC 0.1A, 16W 50/60Hz	16kW



Micro-v i⁴

The logical step in pump evolution - the Micro-V i⁴ is what you have always wanted from a mini pump

CODE	MODEL
N645	Aspen Micro-v Pump

Micro v i ⁴ Pump Specification					
Max Flow	L/h @ Max Rec Head	Suction Max Lift	Sound Level @ 1m	Supply Voltage	Max Unit Output
14.5 L/h @ 0 Head	10L/h @ 10m Head	2m	19 dB(A)	100/250V AC 0.45A, 50/60Hz	19.3kW



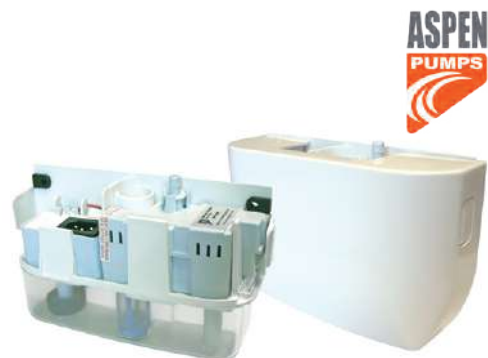
Aspen Condensate Pumps

Mini Blanc

The 'ultra quick fit' Mini Blanc is designed to be fitted beneath high wall indoor units offering easy access for future maintenance.

CODE	MODEL
N633	Aspen Mini Blanc Pump

Mini Blanc Pump Specification					
Max Flow	L/h @ Max Rec Head	Suction Max Lift	Sound Level @ 1m	Supply Voltage	Max Unit Output
12 L/h @ 0 Head	6L/h @ 10m Head	2m	21 dB(A)	230VAC 0.1A, 16W 50/60Hz	16kW



182 W x 55 D x 115 mm H

Silent+ Mini Lime

The Silent+ Mini Lime is designed around a 'total system approach' and includes many features to create a truly silent system. Perfect for offices and meeting rooms. ('Pump only pack' also available).

CODE	MODEL
N639	Aspen Silent+ Mini Lime (With Ivory Slimline Trunking)
N638	Aspen Silent+ Mini Lime (With Ivory BBJ Economy Trunking)
N644	Aspen Silent+ Mini Lime (With Ivory Inoac Trunking)
N641	Aspen Silent+ Mini Lime (Pump Only)

Silent+ Mini Lime Pump Specification					
Max Flow	L/h @ Max Rec Head	Suction Max Lift	Sound Level @ 1m	Supply Voltage	Max Unit Output
12 L/h @ 0 Head	6L/h @ 10m Head	n/a	21 dB(A)	230VAC 0.1A, 16W 50/60Hz	16kW



Maxi Lime

Designed for larger units and humid environments.

The Maxi Lime trunking pump gives you supreme power when needed. ('Pump only pack' also available).

Maxi Lime Pump Specification					
Max Flow	L/h @ Max Rec Head	Suction Max Lift	Sound Level @ 1m	Supply Voltage	Max Unit Output
35 L/h @ 0 Head	10L/h @ 15m Head	n/a	35 dB(A)	230VAC 0.1A, 16W 50/60Hz	46kW

CODE	MODEL
N628	Aspen Maxi Lime (With Ivory BBJ Economy Trunking)
N627	Aspen Maxi Lime (Pump Only)



Aspen Tank Pumps

A great selection of tank pumps from the condensate pump leaders designed specifically for the refrigeration and air conditioning industry.

Mini Tank Pump

The new and improved Mini Tank pump can be wall mounted, floor mounted, in-pan or suspended on M8/M10 rod. Using piston technology this is a compact powerful and multi functional tank pump.

CODE	MODEL
N643	Aspen Mini Tank Pump (69 H x 210 W x 89mm D)

Mini Tank Pump Specification					
Max Flow	Max Rec Head	Suction Max Lift	Sound Level @ 1m	Supply Voltage	Max Unit Output
35 L/h @ 0 Head	15m	N/A	35 dB(A)	230VAC 0.1A, 16W 50/60Hz	46kW



Full range of Aspen Tank Pumps continues over page

Aspen Tank Pumps

Max Hi-Flow

The best in class Max Hi-Flow tank pump carries on the Aspen Pumps tradition of build quality and high performance. With the lowest dB(A) rating & best IP rating (IP24 splash proof) of any tank pump, the Max Hi-Flow is the quietest and safest pump in its class.

- IP24 - Splash proof
- Easy access tank
- Built in spirit level
- Plug & play



CODE	MODEL
N609	Aspen Max Hi-Flow Tank Pump (134 H x 285 W x 144mm D)

Aspen Max Hi-Flow Specification					
Max Flow	L/h @ Max Rec Head	Suction Max Lift	Sound Level @ 1m	Supply Voltage	Max Unit Output
550 L/h	55L/h @ 5m Head	N/A	44 dB(A)	230VAC, 0.2A 50/60Hz	733kW

Hi-Lift 1 Litre & 2 Litre

The world's only peristaltic tank pump offers unsurpassed high head and unmatched reliability.

CODE	MODEL
N606	Aspen Hi-Lift Tank Pump 1 Litre (132 H x 244 W x 148mm D)
N607	Aspen Hi-Lift Tank Pump 2 Litre (164 H x 244 W x 148mm D)

Aspen Hi-Lift 1 & 2 Litre Specification					
Max Flow	Max Rec Head	Suction Max Lift	Sound Level @ 1m	Supply Voltage	Max Unit Output
11 L/h @ 0 Head	12m	N/A	51 dB(A)	230VAC, 0.4A 50/60Hz	14kW



Heavy Duty 6 & 10

With an impressive flow rate, these robust and reliable heavy duty pumps are perfect for the rapid removal of large quantities of condensate water. 4 litre tank capacity on both models.

CODE	MODEL
N625	Aspen HD6 Tank Pump 4 Litre (205 H x 300 W x 150mm D)
N626	Aspen HD10 Tank Pump 4 Litre (265 H x 300 W x 150mm D)

Aspen Heavy Duty 6 & 10 Specification					
Max Flow 6 - 10	Max Rec Head 6 - 10	Suction Max Lift	Sound Level dB(A) @ 1m	Supply Voltage	Max Unit Output kW
900 - 1070 L/h	7m - 9m 180 - 100 L/h	N/A	HD6-60 HD10-64	230VAC, 1.5A 50Hz	HD6-1200 HD10-1460



Macerator 4 Litre & 10 Litre

Designed to collect water from multiple refrigeration cabinets. The internal filter blade prevents the pumps from clogging.

CODE	MODEL
N516	Aspen Macerator Pump 4 Litre (230 H x 335 W x 150mm D)
N517	Aspen Macerator Pump 10 Litre (230 H x 390 W x 310mm D)

Aspen Macerator 4L & 10L Specification					
Max Flow	Max Rec Head	Suction Max Lift	Sound Level @ 1m	Supply Voltage	Max Unit Output kW
780 L/h @ 0 Head	8.5m	N/A	64 dB(A)	230VAC, 0.38A 50/60Hz	N/A



Aspen Peristaltic Condensate Pumps

Universal

The top selling universal is operated by 2 air temperature sensors. The peristaltic rotary movement creates a continuous pressure meaning the pump can be sited 8m away via optional 8m cable supplied separately.

CODE	MODEL
N602	Aspen Universal Peristaltic Pump

Aspen Universal Specification					
Max Flow	Max Rec Head	Suction Max Lift	Sound Level @ 1m	Supply Voltage	Max Unit Output
6.5 L/h @ 12m Head	12m	3m	47 dB(A)	230VAC, 0.2A 50/60Hz	8.5kW



115 H x 77 W x 135mm D

Standard

Operated by a 230V AC cooling signal, the standard peristaltic sets the standard for reliability.

CODE	MODEL
N600	Aspen Standard Peristaltic Pump

Aspen Standard Specification					
Max Flow	Max Rec Head	Suction Max Lift	Sound Level @ 1m	Supply Voltage	Max Unit Output
6.5 L/h @ 12m Head	12m	3m	47 dB(A)	230VAC, 0.2A 50/60Hz	8.5kW



115 H x 77 W x 135mm D

MK4

The MK4 operates using two water sensors. The lower sensor comes into contact with water, the heat conductivity from that sensor provides a temperature difference between the second - energising the pump.

CODE	MODEL
N604	Aspen MK4 Peristaltic Pump

Aspen MK4 Specification					
Max Flow	L/h @ Max Rec Head	Suction Max Lift	Sound Level @ 1m	Supply Voltage	Max Unit Output
6.5L/h @ 12m Head	12m	3m	47 dB(A)	230VAC, 0.2A 50/60Hz	16kW



145 H x 83 W x 160mm D

Mechanical

The Mechanical operates via a reservoir sensor with float switch.

CODE	MODEL
N603	Aspen Mechanical Peristaltic Pump

Aspen Mechanical Specification					
Max Flow	L/h @ Max Rec Head	Suction Max Lift	Sound Level @ 1m	Supply Voltage	Max Unit Output
6.5 L/h @ 12m Head	12m	3m	21 dB(A)	230VAC, 0.1A, 16W 50/60Hz	16kW

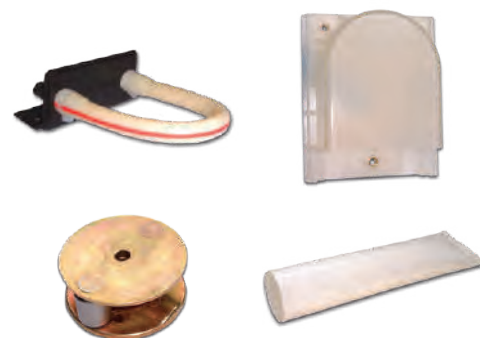


145 H x 83 W x 160mm D

Aspen Peristaltic Pump Spare Parts

A selection of the most popular peristaltic pump spare parts that fit ALL the pumps listed above.

CODE	DESCRIPTION
N612	Spare Head Tube
N6100	Front Housing
N6102	Pump Rotor assembly
N6104	Silicon Grease (100 ml)



Little Giant Condensate Pumps

VCC-20S

Low profile at 125mm, this 1 litre tank pump from world leading Little Giant offers proven reliability. Ideal for cassette air conditioning and refrigeration dairy decks.

CODE	MODEL
N650	Little Giant VCC-20S 1 Litre Tank Pump

Little Giant VCC-20S Specification				
Max Flow	Max Head	Suction Max Lift	Sound Level @ 1m	Supply Voltage
294 L/h	4.3m	N/A	58-62 dB(A)	240VAC, 0.6A 50Hz

LittleGIANT®



125 H x 300 W x 125mm D

VCMA-20S

This world leading tank pump has been unrivalled since 1999 with proven reliability perfect for both refrigeration and a/c applications.

CODE	MODEL
N651	Little Giant VCMA-20S 2 Litre Tank Pump

Little Giant VCMA-20S Specification				
Max Flow	Max Head	Suction Max Lift	Sound Level @ 1m	Supply Voltage
294 L/h	4.3m	N/A	58-62 dB(A)	240VAC, 0.6 A 50Hz

LittleGIANT®



178 H x 288 W x 127mm D

VCL-24S

This heavy duty 3.8 litre tank pump from Little Giant was designed to offer high flow rates, high lifts with its quality centrifugal pump.

CODE	MODEL
N652	Little Giant VCL-24S 3.8 Litre Heavy Duty Tank Pump

Little Giant VCL-24S Specification				
Max Flow	Max Head	Suction Max Lift	Sound Level @ 1m	Supply Voltage
900 L/h	5.9m	N/A	58-62 dB(A)	240VAC, 1.0A 50Hz

LittleGIANT®



263 H x 305 W x 150mm D

VCL-45S

This robust large capacity 3.8 litre tank pump offers a high flow and lift rate at 1560 L/h with a 10 meter lift. Built to move large volumes of water.

CODE	MODEL
N653	Little Giant VCL-45S 3.8 Litre Heavy Duty Tank Pump

Little Giant VCL-45S Specification				
Max Flow	Max Head	Suction Max Lift	Sound Level @ 1m	Supply Voltage
1560 L/h	10.5m	N/A	58-62 dB(A)	240VAC, 1.8A 50Hz

LittleGIANT®



267 H x 305 W x 150mm D

PH-2L

This PH-2L pump, from Little Giant, still has the reliability you associate with such a well respected brand, but with no bells and whistles making it competitively priced and totally reliable.

CODE	MODEL
N647	Little Giant PH-2L 2 Litre Tank Pump

Little Giant PH-2L Specification				
Max Flow	Max Head	Suction Max Lift	Sound Level @ 1m	Supply Voltage
300 L/h	4.8m	N/A	58 dB(A)	230VAC, 0.1A 50Hz

LittleGIANT®



180 H x 290 W x 130mm D

Little Giant Condensate Pumps

EC-400

Two piece design to allow installation within the smallest A/C unit or the pump unit can be placed in the ceiling void above or in trunking. Pump can be mounted up to one metre above the sensing unit.

CODE	MODEL
N666	Little Giant EC-400 Mini Pump

Little Giant EC-400 Specification				
Max Flow	Max Head	Suction Max Lift	Sound Level @ 1m	Supply Voltage
14 L/h	6 L/h @ 4m Head	1m	58 dB(A)	230VAC, 0.1A 50Hz

45 H x 110 W x 35mm D, Pump Dims Only

LittleGIANT®



Sauermann Condensate Pumps

Delta Pack

Complete kit intended for wall mounted air conditioning units.

Includes a new elbow design that can be easily opened by hand by a simple finger push - no tool is needed - and the Si-10 UNIVERS'L pump which incorporates the latest in piston pump technology.

The new Delta Pack's streamlined design complements wall mounted air conditioning units. Low sound level and highly resistance to pollution created by the general environment.

CODE	MODEL
N758	Delta Pack Condensate pump (80 x 60 mm) White

Sauermann Delta Pack Specification					
Max Flow	Max Head	Suction Max Lift	Sound Level @ 1m	Supply Voltage	Max Unit Output
20 L/h	4 L/h @ 10m Head	N/A	22 dB(A)	230VAC, 14W 50Hz	20kW

Sauermann®



Omega Pack

The complete under the unit packaged pump for wall mounted split system air conditioning units.

CODE	MODEL
N701	Omega Pack Condensate Pump

Sauermann Omega Pack Specification					
Max Flow	Max Head	Suction Max Lift	Sound Level @ 1m	Supply Voltage	Max Unit Output
20 L/h	4 L/h @ 10m Head	N/A	22 dB(A)	230VAC, 14W 50Hz	20kW

Sauermann®



102 H x 358 W x 85mm D

Si-20

The Si-20 is the same pump fitted to the Omega Pack. This slimline condensate pump can be fitted inside the split or in the trunking.

CODE	MODEL
N705	Si-20 Slimline Condensate Pump

Sauermann Si-20 Specification					
Max Flow	Max Head	Suction Max Lift	Sound Level @ 1m	Supply Voltage	Max Unit Output
20 L/h	4 L/h @ 10m Head	3m	22 dB(A)	240VAC, 14W 50Hz	20kW

Sauermann®



38 H x 133 W x 38mm D (Pump body only)

Sauermann Condensate Pumps

Si-83

The Tank Pump Re-Invented

Sauermann engineers have redesigned the tank pump from the inside-out, making the Si-83 more durable, compact, and powerful than any other tank pump in its class, all while redefining just how easy tank pump installation and maintenance can be in the field.

The Si-83 even comes with a customized Smartphone App that makes installation both simple and intuitive. Can be floor-mounted, wall-mounted, or suspended from the ceiling. Rod mounting system makes leveling easy.

The Si-83 is a 2 litre tank pump with an ultra low profile making it the perfect pump for replacing 0.5, 1.0 and 2.0 litre tank pumps.

CODE	MODEL
N755	Si-83 2 Litre Condensate Tank Pump

Sauermann Si-83 Specification				
Max Flow	Max Head	Suction Max Lift	Sound Level @ 1m	Supply Voltage
700 L/h	65 L/h @ 5.4m Head	N/A	45 dB(A)	230VAC, 70W 50/60Hz

sauermann®



129 H x 287W x 146mm D

Si-10 Univers'L

The Universal replacement pump, that not only fits the Delta Pack but other trunking systems.

CODE	MODEL
N719	Si-10 Condensate Pump

Sauermann Si-10 Specification					
Max Flow	Max Head	Suction Max Lift	Sound Level @ 1m	Supply Voltage	Max Unit Output
20 L/h	10m	N/A	22 dB(A)	230VAC, 14W 50/60Hz	20kW

sauermann®



94 H x 86 W x 75mm D

Si-30

The Si-30 is a mini pump with float operated reservoir. The three way mounting bracket allows fitting to the wall, pipework or ceiling.

CODE	MODEL
N723	Si-30 Mini Condensate Pump

Sauermann Si-30 Specification					
Max Flow	Max Head	Suction Max Lift	Sound Level @ 1m	Supply Voltage	Max Unit Output
20 L/h	4 L/h @ 10m Head	3m	58-62 dB(A)	240VAC, 14W 50/60Hz	20kW

sauermann®



Si-30 : can replace SI3080, SI3100, SI3200

Si-30 Detect+

New version of the Si-30 two piece pump (above) with state of the art reservoir sensor and fault diagnostics.

CODE	MODEL
N728	Si-30-04 Mini Condensate Pump

Sauermann Si-30 Detect+ Specification					
Max Flow	Max Head	Suction Max Lift	Sound Level @ 1m	Supply Voltage	Max Unit Output
20 L/h	4 L/h @ 10m Head	3m	58-62 dB(A)	240VAC, 14W 50/60Hz	20kW

sauermann®



102 H x 358 W x 85mm D

Sauermann Condensate Pumps

PE 5100

The PE 5100 operates by detecting a 6°C temperature change via two temperature probes located in the air on and air off position.

CODE	MODEL
N711	PE 5100 Peristaltic Condensate Pump

Sauermann PE 5100 Peristaltic Pump Specification					
Max Flow	Max Head	Suction Max Lift	Sound Level @ 1m	Supply Voltage	Max Unit Output
6 L/h	12m	2m	30 dB(A)	230VAC, 75W 50/60Hz	8kW

 sauermann®



91 H x 110 W x 109mm D

Si-2052

Universal a/c unit lift pump. Can be used as a replacement pump for most makes of cassette systems.

CODE	DESCRIPTION
N727	Universal A/C Condensate Lift Pump

Sauermann Si-2052 Specification					
Max Flow	Max Head	Suction Max Lift	Sound Level @ 1m	Supply Voltage	Max Unit Output
70 L/h	95cm	3m	30 dB(A)	230VAC, 14W 50/60Hz	20kW

 sauermann®



94 H x 86 W x 75mm D

EQUIPMENT SPARE PARTS

STOCKISTS OF MANY OF THE WORLD'S LEADING REFRIGERATION CASES, CABINETS & MANUFACTURERS PARTS





STOCK

Large stocks of spares & specialist items available



SOURCE

Speak to our refrigeration experts to source parts to match your requirements



SUPPLY

Stock items despatched for next day delivery


equipment spare parts
 the sixth sense in refrigeration

01772 694474
www.equipmentspareparts.co.uk

www.fsw.uk.com

N SECTION

249

Sauermann Condensate Pump Accessories

Cassette to Tank Pump Adapters

Rubber Adapter to connect tank pump to cassette

CODE	DESCRIPTION
N737	1" x 3/4" Rubber Adaptor (Pack 3)
N738	1-1/4" x 3/4" Rubber Adaptor (Pack 3)
N739	1-1/2" x 3/4" Rubber Adaptor (Pack 2)



Self Seal Adapter for 1/4 Condensate Hose

Simply drill 10 mm hole in your soil or waste pipe, tighten up fitting to hold securely in the soil pipe then fit and secure your 1/4 hose pipe. Simple and easy.

CODE	DESCRIPTION
N746	Self Seal Adapter for 1/4" Hose (6 Pack)



Rubber Hose

Soft and flexible clear rubber tubing 15mm I.D. 500 mm long.

CODE	DESCRIPTION
N478	Clear Rubber Hose (15mm x 500mm Long)



Sauermann Peristaltic Pump Spare Parts

N715 is a complete front end pump head replacement assembly.
N716 is just a replacement tube only.

CODE	DESCRIPTION
N715	Sauermann Peristaltic Head Assembly
N716	Sauermann Peristaltic Replacement Tube Only



Pumphouse Cassette to Tank Pump Adapters

Rubber Adapter To Connect Tank Pump To Cassette

These adapters are coloured to make them quicker and easier to identify, green for the 1", blue for the 1-1/4" and black for the 1-1/2". The multi-pack (N730) contains 1 x green, 1 x blue and 1 x black cassette adapter.

CODE	DESCRIPTION
N776	1" x 3/4" Green Coloured Rubber Adaptor (Pack 3)
N777	1-1/4" x 3/4" Blue Coloured Adaptor (Pack 3)
N778	1-1/2" x 3/4" Black Coloured Adaptor (Pack 3)
N730	Cassette Drain Adaptors Assorted Multi-pack (Pack 3)



CONSOLVE®

Premium Rubber to Solvent Weld A/C Drain Adaptor

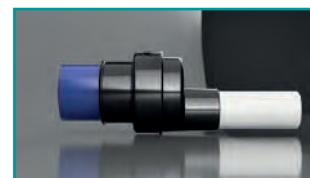
CONSOLVE® is Hydro-Dynamically designed for an unrestricted cascading flow of condensate! The flexible rubbery end is made of a very high quality automotive grade rubber, which is simply pushed over and hose-clamped onto the drain outlet of the AC Unit.

Available in the popular sizes:

SMALL 1" - 3/4" (21.5mm) & MEDIUM 1 1/4" - 3/4" (21.5mm)

NO MORE COSTLY CALL OUTS AND NO MORE CEILING STAINS!

CODE	DESCRIPTION
NT100	Small Consolve Drain Adaptor 1" - 3/4" (21.5mm)
NT101	Medium Consolve Drain Adaptor 1-1/4" - 3/4" (21.5mm)



Blue Diamond Condensate Pumps

MicroBlue®

MicroBlue® is a silent running micro pump available as a fascia pack to fit underneath wall mount splits, a trunking pack or simply the pump and reservoir on its own. The MicroBlue® can also be mounted in any orientation whilst operating both wet and dry continuously.

CODE	DESCRIPTION
N773	MicroBlue Pump with Reservoir with High Level Audible Alarm
N767	MicroBlue Pump with Reservoir with Fail Safe Alarm Shut Off
N774	MicroBlue Fascia Kit Only for Wall Mount Split A/C Units (MicroBlue pump not included)
N775	MicroBlue Pump Including Ducting with Fail Safe Alarm Shut Off

MicroBlue Specification					
Max Flow	Max Head	Suction Max Lift	Sound Level @ 1m	Supply Voltage	Max Unit Output
5L/h	5m	2m	17 dB(A)	230VAC, 0.2A 50/60Hz	3.5kW



MiniBlue®

Running either wet or dry, the MiniBlue® is whisper quiet whilst reliably removing condensate and debris. Inherently reliable whilst self priming it gives peristaltic performance at the price of a piston pump.

CODE	DESCRIPTION
N766	MiniBlue (Pump only requires cooling signal)
N768	MiniBlue with Temperature Sensor

MiniBlue Specification					
Max Flow	Max Head	Suction Max Lift	Sound Level @ 1m	Supply Voltage	Max Unit Output
5 L/h	8m	5m	21 dB(A)	230VAC, 0.2A 50/60Hz	3.5-8kW



MaxiBlue®

MaxiBlue® is available with Reservoir, Temperature or Drainstik® sensor. Making it a versatile pump for mid range air conditioning applications.

CODE	DESCRIPTION
N637	MaxiBlue with Reservoir
N636	MaxiBlue with Temperature sensor
N635	MaxiBlue with Drainstik®

MaxiBlue Specification					
Max Flow	Max Head	Suction Max Lift	Sound Level @ 1m	Supply Voltage	Max Unit Output
14 L/h	8m	8m	21 dB(A)	230VAC, 0.2A 50/60Hz	8-14kW



MegaBlue®

MegaBlue® is available with Reservoir, Temperature or Drainstik® sensor. The MEGABLUE® is the juggernaut of the condensate removal range.

CODE	DESCRIPTION
N762	MegaBlue with Reservoir
N760	MegaBlue with Temperature sensor
N765	MegaBlue with Drainstik®

MegaBlue Specification					
Max Flow	Max Head	Suction Max Lift	Sound Level @ 1m	Supply Voltage	Max Unit Output
50L/h	20m	7m	23 dB(A)	230VAC, 0.2A 50/60Hz	14-50kW



Dairy Cabinet Condensate Pumps

A good range of dairy cabinet pumps to suit both budget and requirements from plastic to stainless steel manufactured by well known names in condensate removal.

Aspen ERRP Dairy Cabinet Pumps

Made of robust plastic, the lightweight ERRP (Economical Retail Refrigeration Pump) effectively pumps away defrost water & filters debris.



CODE	MODEL	DESCRIPTION
N6110	FP2597	Low Profile ERRP Dairy Pump - Top Inlet (3.5 Litres)
N613	FP2318	ERRP Dairy Pump - Top Inlet (11 Litres)

Aspen Low Profile ERRP Specification

Max Flow	Max Rec Head	Sound Level @ 1m	Supply Voltage	Dimensions (mm) H x W x D
190 L/h @ 0 Head	21m	60 dB(A)	230VAC, 0.2A 50/60H	75 x 530 x 240

Aspen ERRP Specification

Max Flow	Max Rec Head	Sound Level @ 1m	Supply Voltage	Dimensions (mm) H x W x D
225 L/h @ 0 Head	35m	60 dB(A)	230VAC, 0.2A 50/60Hz	100 x 590 x 450

Dairy Cabinet Pumps

Our dairy cabinet range offers an unrivaled solution to supermarket refrigeration. Only 76 mm high this s/steel easy to service pump delivers a complete solution.

Available in 2 models with:

DCP-30A standard model supplied with lid and high level alarm
DCP-30E Economy model - no lid and no alarm.

CODE	MODEL	DESCRIPTION
N529	DCP-30A	Standard Dairy Cabinet Pump (5.5 Litres)
N532	DCP-30E	Economy Dairy Cabinet Pump (5.5 Litres)

DCP-30A/E Specification

Max Flow	Max Head	Sound Level @ 1m	Supply Voltage	Dimensions (mm) H x W x D
700 L/h	22.5 m	65 dB(A)	240V AC 0.6A 50Hz	76 x 200 x 640 (A&E)



N529



N532

BlueDiamond® ArctikBlue®

Designed for use in multideck and dairy cabinet condensate removal, the ArctikBlue® incorporates the ultra-reliable MegaBlue pump which is able to run dry or self-prime, meaning it can be sited above any pipe work and away from hazardous areas.

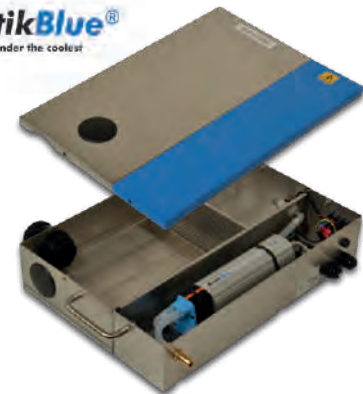
CODE	MODEL
N771	BlueDiamond ArctikBlue Dairy Cabinet Pump

Blue Diamond ArctikBlue Specification

Max Flow	Max Head	Sound Level @ 1m	Supply Voltage	Dimensions (mm) H x W x D
50 L/h	20 m	23 dB(A)	230VAC 60Hz	87 x 430 x 305



Reliability under the coolest cabinets



Sauermann Si-1931 Dairy Cabinet Pump

With the ability to discharge heavy and contaminated condensates this stainless steel pump with non return valve and easy clean mesh filter is suitable to slide under most refrigeration cabinets.

CODE	MODEL
N704	Sauermann Si-1931 Dairy Cabinet Pump

Sauermann Si-1931 Specification

Max Flow	Max Head	Sound Level @ 1m	Supply Voltage	Dimensions (mm) H x W x D
700 L/h	24 m	> 60 dB(A)	230VAC 50Hz	80 x 610 x 235



Condensate Evaporator Tray

A cast aluminium evaporator tray with built in electric elements for use with air conditioning, refrigeration and display case applications where the need for forced evaporation is required for condensate removal. Model is self regulating, with thermal overload protection.



CODE	MODEL
N510	ET150 Condensate Tray (150 ml/hr)

ONLY
Available from
FSW



FSW | **cooleo**
Pre Insulated Copper

AVAILABLE IN BLACK OR WHITE

20M COIL LENGTH	QUICK & EASY INSTALL	PROTECTS COPPER DURING TRANSPORT
IDEAL FOR ONE PERSON INSTALLS	TOUGH OUTER COATING	RESISTANT TO BIRDS & VERMIN



www.fsw.uk.com



Aspen Xtra Condensate Pump Accessories

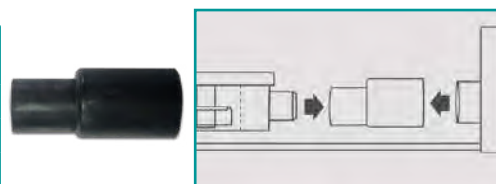
Extensive range of condensate pumps accessories from the Aspen Xtra range.



Mini Pump Adapters

Rubber Adapter to connect ducted unit to a mini pump

CODE	DESCRIPTION	AC OUTLET	PUMP INLET
N7060	AC Drain to Mini Pump Adaptor (Pack 3)	20 mm	16 mm
N7061	AC Drain to Mini Pump Adaptor (Pack 3)	25 mm	16 mm
N7062	AC Drain to Mini Pump Adaptor (Pack 3)	32 mm	16 mm



Long Arm Bend

To connect a wall mount to mini pump reservoir.

CODE	DESCRIPTION	AC OUTLET	PUMP INLET
N7053	Long Arm Bend (Pack 3)	12 mm	16 mm



Offset Connector

For a wall mount to mini pump reservoir.

CODE	DESCRIPTION	AC OUTLET	PUMP INLET
N7063	Offset Connector (Pack 3)	16 mm	16 mm

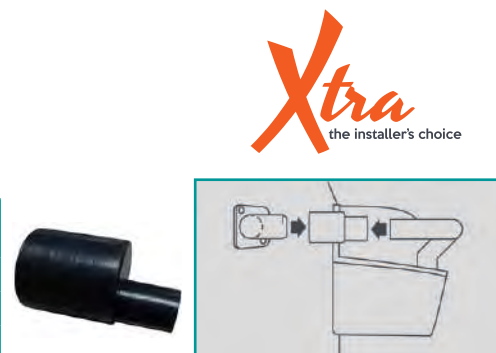


Tank Pump Adapters

Rubber Adapter

To connect a cassette unit condensate drain pipe to a tank pump.

CODE	DESCRIPTION	AC OUTLET	O/FLOW PIPE
N7070	Rubber Tank Pump Adapter (Pack 3)	16 mm	21 mm
N7071	Rubber Tank Pump Adapter (Pack 3)	26 mm	21 mm
N7072	Rubber Tank Pump Adapter (Pack 3)	32 mm	21 mm

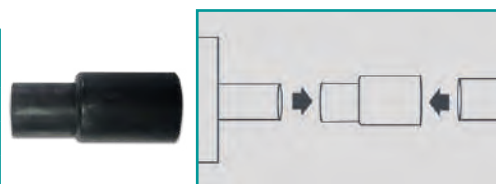


Pipe to Pipe Adapters

Rubber Adapter

To Connect 3/4" (21 mm) overflow pipe to waste pipe

CODE	DESCRIPTION	WASTE	O/FLOW PIPE
N7050	Overflow To Waste Pipe Adapter (Pack 3)	25 mm	21 mm
N7051	Overflow To Waste Pipe Adapter (Pack 3)	32 mm	21 mm
N7052	Overflow To Waste Pipe Adapter (Pack 3)	40 mm	21 mm



Hose Adapters & Connector

Stepped Hose Adapter

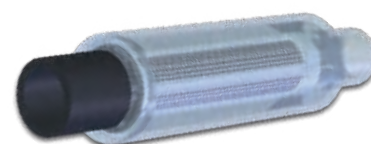
CODE	DESCRIPTION
N7045	Stepped Hose Reducer 1/4", 3/8", 1/2" & 5/8" (Pack 5)



In-line Filter

16 mm in-line filter fits directly onto the pump reservoir inlet to protect the pump from dirt and debris entering the pumps mechanism.

CODE	DESCRIPTION
N7080	In-Line Filter (16 mm)



Aspen Xtra Condensate Pump Accessories

Extensive range of condensate pumps accessories from the Aspen Xtra range.

Hose To Hose Connectors and Reducer

Straight, Elbow, Tee & Reducing Hose Connectors

CODE	DESCRIPTION
N611	1/4" Straight Connector (Pack 5)
N7040	3/8" Straight Connector (Pack 5)
N7044	1/4" to 3/8" Straight Reducing Connector (Pack 5)
N7031	1/4" 90° Elbow (Pack 5)
N7041	3/8" 90° Elbow (Pack 5)
N7032	1/4" Equal Tee (Pack 5)
N7082	3/8" Equal Tee (Pack 5)



Overflow To Hose Adapter

Adapts end of overflow pipe to take 1/4 or 3/8 hose.

CODE	DESCRIPTION
N7035	Overflow to Hose Adapter (3 Pack)



Hose To Soil Pipe Adapter

Simply drill a 11.5 mm hole in your soil or waste pipe, tighten up fitting to hold securely in the soil pipe then fit and secure your 1/4 or 3/8 hose pipe. Simple and easy.

CODE	DESCRIPTION
N7034	Hose to Soil Pipe Adaptor (Pack of 3)



Non-Return Valve

Prevents back flow of water. Available to suit either 1/4 or 3/8 hose.

CODE	DESCRIPTION
N617	Non-Return Valve 1/4" x 1/4" (Pack of 5)
N618	Non-Return Valve 3/8" x 3/8" (Pack of 5)



Replacement Mini Lime Hose

1 metre long replacement mini lime hose. This soft and very flexible hose has proved popular with both service and installation engineers and used for a multitude of drain type applications.

CODE	DESCRIPTION
N7015	Replacement Mini Lime Hose (1 Metre)



1 Amp In-Line Fuse & Holder

This 1 Amp fuse should always be installed between the power supply and the live feed to the pump, these fuses should be used when installing the mini and maxi pumps plus the hi flow tank pumps.

CODE	DESCRIPTION
N7042	1 Amp In-Line Fuse & Holder



Xtra Drain Accessories Kit

This quality toolbox contains 12 compartments with a range of Xtra accessories, simply replace or refill the compartments with your favorite Xtra accessories when you run out.

CODE	DESCRIPTION
N7020	Aspen Xtra Drain Accessories Kit



Copper Water Tube & Solder Fittings

Copper Water Tube - Half Hard x 3m Lengths

CODE	SIZE
N100	15 mm
N101	22 mm
N102	28 mm



Copper Elbow 90°

CODE	SIZE
N110	15 mm C x C
N111	22 mm C x C
N112	28 mm C x C



Copper Solder Tee

CODE	SIZE
N125	15 mm C x C
N126	22 mm C x C
N127	28 mm C x C



Copper Solder Coupler

CODE	SIZE
N120	15 mm C x C
N121	22 mm C x C
N122	28 mm C x C



Copper Solder Reducing Coupler (C x C)

CODE	SIZE
N130	22 x 15 mm C x C
N131	28 x 22 mm C x C



Copper Solder Reducing Coupler (F x C)

CODE	SIZE
N134	22 x 15 mm F x C
N135	28 x 22 mm F x C
N136	28 x 15 mm F x C



Copper Solder End Cap

CODE	SIZE
N138	15 mm
N139	22 mm
N140	28 mm



Evaporator Drain Pan Adapter

Plastic drain tray adapter fits most common evaporators: Friga Bohn Searle and Luve. Most commonly used with the N167 Brass 22mm to 1" Female BSP Compression Elbow. (N157 Straight Compression Coupler also fits adapter) Some of the smaller panel cooler evaporators come with a 3/4" BSP male threaded plastic adapter. For these outlets please choose the N156 (straight) or N166 (elbow) brass fitting.



CODE	SIZE
N190	1" Male BSP

Compression Fittings

Compression Coupler

CODE	SIZE
N145	15 mm
N146	22 mm
N147	28 mm



Compression Adapter to Male BSP

CODE	SIZE
N150	15 mm x 1/2" Male BSP
N151	22 mm x 3/4" Male BSP
N152	22 mm x 1" Male BSP



Adapter - Female BSP

CODE	SIZE
N155	15 mm x 1/2" Female BSP
N156	22 mm x 3/4" Female BSP
N157	22 mm x 1" Female BSP



Compression Elbow

CODE	SIZE
N160	15 mm
N161	22 mm
N162	28 mm



Compression Elbow to Female BSP

CODE	SIZE
N165	15 mm x 1/2" Female BSP
N166	22 mm x 3/4" Female BSP
N167	22 mm x 1" Female BSP



Compression Tee

CODE	SIZE
N170	15 mm
N171	22 mm
N172	28 mm



PTFE Tape

12 mm Wide x 12 M Long

CODE	SIZE
N180	PTFE Tape

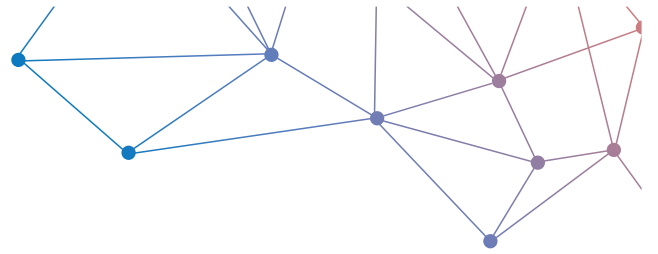


Alfa Tape

A self fusing tape utilised to insulate and seal electrical cable splices where high and low temperature stability is needed, and where moisture, weather and radiation resistance is required. Mechanically it provides a high tension wrap that creates an enduring seal under extreme environmental conditions. Due to its remarkable properties, it is also used to repair punctured water, air and hydraulic pipes that are subject to pressure and temperature variants.

CODE	SIZE
N185	Alfa Tape Roll (25 mm Wide x 3.6 M long)





Sauermann's new Delta Pack 80X60

Pump inside a trunk



Large space
for tubing



Quick and easy
installation



Low operating
sound level
EN ISO 3744 tested



Patented
piton pump
technology


MAX FLOW RATE
20 L/h
(5 gph)

QUICK FIT & RELEASE
Easy installation - Easy maintenance

Sauermann UK
Trident Business Park
7-9 Amy Johnson Way
Blackpool / England / FY4 2RP

Tel : (+44)1253 340170
Fax : (+44) 1253 340179
info.uk@sauermanngroup.com

www.sauermann.co.uk

FloPlast Strap on Boss

110 mm Grey Strap on Boss with rubber reducers to suit 3/4", 1-1/4" and 1-1/2" waste pipe.

CODE	DESCRIPTION
N459	110mm Strap on Boss
N461	1-1/4 x 3/4 Rubber Reducer
N460	1-1/2 x 3/4 Rubber Reducer
N463	1-1/4 Rubber for Strap on Boss
N464	1-1/2 Rubber for Strap on Boss



Hep2o Waste Valve (White Only)

Hygienic self sealing valve designed to prohibit the escape of foul sewage smells in to the air. Fits where space is limited. Won't dry out. Solvent weld and universal adaptor to suit the larger Floplast and grey PVC pipe sizes.

CODE	DESCRIPTION
N428	32mm White Hepvo Self Seal Waste Valve
N433	32mm White Hepvo Universal Adaptor
N429	32mm White Hepvo Adaptor (Solvent Adaptor)



3/4" Convalve

In-line Vertical Non-Return Valve

The Convalve from McAlpine is an In-Line Non-Return Valve that must be fitted in the vertical position. Inlet and outlet connection for 19/23mm pipe. Available in white only.

CODE	DESCRIPTION
N438	Convalve 3/4" In-line Vertical Non Return Valve



Rothenberger 42TC Plastic Pipe Cutters

Designed to cut almost every type of plastic pipe without deforming or squashing the wall. Cuts pipe up to 42 mm Ø.

CODE	DESCRIPTION
N415	42TC Rothenberger Ratchet Tube Cutter



FloPlast Solvent Weld Waste Pipe & Fittings

3/4" Overflow Pipe and 1-1/4" ABS Solvent Weld Drain Pipe and fittings in white and black.

Waste Pipe (White)

CODE	DESCRIPTION
N440	3/4" Pipe x 3M (White)
N420	1-1/4" Pipe x 3M (White)



Elbows (White)

CODE	DESCRIPTION
N442	3/4" 90° Elbow (White)
N422	1-1/4" 90° Short Radius Elbow (White)
N423	1-1/4" 92.5° Long Radius Elbow (White)



45° Elbow (White)

CODE	DESCRIPTION
N445	3/4" 45° Elbow (White)
N424	1-1/4" 45° Elbow (White)



Straight Coupler (White)

CODE	DESCRIPTION
N444	3/4" Straight Coupler (White)
N421	1-1/4" Straight Coupler (White)



Equal Tee (White)

CODE	DESCRIPTION
N443	3/4" Equal Tee (White)
N425	1-1/4" Equal Tee (White)



Reducer & Rodding Eye (White)

CODE	DESCRIPTION
N462	1-1/4" to 3/4" Reducer (White)
N426	1-1/4" Rodding Eye (White)



Waste Pipe (Black)

CODE	DESCRIPTION
N4140	3/4" Pipe x 3M (Black)
N4142	1-1/4" Pipe x 3M (Black)



Elbows (Black)

CODE	DESCRIPTION
N4145	3/4" 90° Elbow (Black)
N4147	1-1/4" 90° Short Radius Elbow (Black)



45° Elbow (Black)

CODE	DESCRIPTION
N4180	3/4" 45° Elbow (Black)
N4182	1-1/4" 45° Elbow (Black)



Straight Coupler (Black)

CODE	DESCRIPTION
N4184	3/4" Straight Coupler (Black)
N4186	1-1/4" Straight Coupler (Black)



Equal Tee (Black)

CODE	DESCRIPTION
N4188	3/4" Equal Tee (Black)
N4190	1-1/4" Equal Tee (Black)



Reducer & Rodding Eye (Black)

CODE	DESCRIPTION
N4191	1-1/4" to 3/4" Reducer (Black)
N4192	1-1/4" to 1-1/2" Reducer (Black)
N4194	1-1/4" Rodding Eye (Black)



FloPlast Pipe Clips

Snap-in open pipe clips 3/4" in white or black.
Saddle style pipe clip for the 1-1/4" (32 mm) pipe in white or black.

CODE	DESCRIPTION
N441	3/4" (22 mm) mm Open Snap-In Pipe Clip (White)
N447	3/4" (22 mm) mm Open Snap-In Pipe Clip (Black)
N427	1-1/4" (32 mm) Saddle Pipe Clip (White)
N431	1-1/4" (32 mm) Saddle Pipe Clip (Black)



Snap-in Closed Top Pipe Clips

Snap-in, closed top pipe clips, prevent the pipe from accidentally slipping out of the clip particularly when full with water and fitted to ceilings.

CODE	DESCRIPTION
N448	15 mm Snap-In Closed Top Pipe Clip
N450	22 mm Snap-In Closed Top Pipe Clip
N452	28 mm Snap-In Closed Top Pipe Clip



FloPlast Solvent Cement

FloPlast Solvent Cement available in either 125 or 250 ml tubs with brush.

CODE	DESCRIPTION
N430	FloPlast Solvent Cement (125 ml)
N432	FloPlast Solvent Cement (250 ml)



RPC Studding Clips for Waste Pipe

Unique one-piece design manufactured from a composite polyamide alloy combining strength with light weight. RPC Studding Clips are perfect for attaching our wide range of condensate waste pipe onto threaded rod.



Supplied in packs of 10

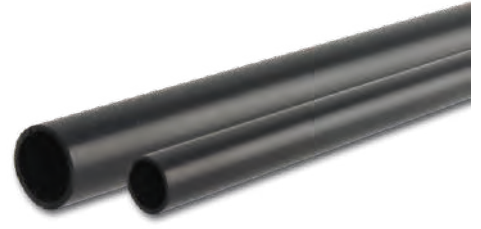
CODE	MODEL	STUD	DESCRIPTION
A222	SC08-22	M8	Suits 21.5mm FloPlast overflow pipe (N440) on 8mm rod
A214	SC08-28	M8	Suits 3/4" (ID) Grey PVC Pipe (N469) on 8mm rod.
A224	SC08-35	M8	Suits 32mm FloPlast waste pipe (N420) and 1" Grey PVC Pipe (N458) on 8mm rod
A225	SC08-42	M8	Suits 40mm waste pipe (XX01159) on 8mm rod
A226	SC10-22	M10	Suits 21.5 mm FloPlast overflow pipe (N440) on 10 mm rod
A227	SC10-28	M10	Suits 3/4" (ID) Grey PVC Pipe on 10mm rod.
A228	SC10-35	M10	Suits 32 mm FloPlast waste pipe (N420) and 1" Grey PVC Pipe (N458) on 10 mm rod

Rigid PVC Grey Drain Pipe & Fittings

Grey Imperial PVC Condensate Drain Pipe to BS-EN1452-2 dimensions supplied in 3mtr lengths and fittings to BS-EN1452-3".

Waste Pipe (Grey)

CODE	DESCRIPTION
N469	3/4" (ID) Pipe x 3M (Grey)
N458	1" (ID) Pipe x 3M (Grey)



90° Elbow (Grey)

CODE	DESCRIPTION
N466	3/4" 90° Elbow (Grey)
N471	1" 90° Elbow (Grey)



Equal Tee (Grey)

CODE	DESCRIPTION
N467	3/4" Equal Tee (Grey)
N472	1" Equal Tee (Grey)



Straight Coupler (Grey)

CODE	DESCRIPTION
N468	3/4" Straight Coupler (Grey)
N473	1" Straight Coupler (Grey)



Reducer & Threaded Adapter (Grey)

CODE	DESCRIPTION
N477	1" PVC x 3/4" Reducer
N476	1" PVC x 1" BSP Adaptor



45° Elbow (Grey)

CODE	DESCRIPTION
N4700	3/4" 45° Elbow
N4702	1" 45° Elbow



PVC Pipe Clips (Grey)

CODE	DESCRIPTION
N4705	3/4" PVC Pipe Clip
N4707	1" PVC Pipe Clip



PVC Pipe Cleaner & Solvent Cement

CODE	DESCRIPTION
N475	PVC Pipe Cleaning Fluid (500 ml)
N474	PVC Tube Solvent Cement (500 ml)



PVC Hose

Wide range of coiled PVC hose available in plain or reinforced and clear to black. Different hose lengths and diameters to meet all your condensate pump waste requirements. See tables below for details.

6 Metre Coils (Clear Braided)

CODE	SIZE	TYPE
N487	1/2" I.D. x 3/4" O.D.	Clear Braided Hose
N489	3/4" I.D. x 1" O.D.	Clear Braided Hose

30 Metre Coils (Clear)

CODE	SIZE	TYPE
N480	1/8" I.D. x 1/4" O.D.	Clear Hose
N481	1/4" I.D. x 3/8" O.D.	Clear Hose
N483	3/8" I.D. x 1/2" O.D.	Clear Hose
N479	1/2" I.D. x 18mm O.D.	Clear Hose

30 Metre Coils (Clear Braided)

CODE	SIZE	TYPE
N482	1/4" I.D. x 1/2" O.D.	Reinforced
N484	3/8" I.D. x 5/8" O.D.	Reinforced
N498	1/2" I.D. x 18mm O.D.	Reinforced

30 Metre Coils (Black Braided)

CODE	SIZE	TYPE
N485	1/4" I.D. x 1/2" O.D.	Reinforced Black
N488	3/8" I.D. x 5/8" O.D.	Reinforced Black



Hose Clips

Bright zinc plated mild steel hose clips, available singly or assorted in a Selectabox.

CODE	SIZE	TO SUIT Ø
N490	HC12	9.5 - 12mm
N491	HC16	11 - 16mm
N492	HC20	13 - 20mm
N493	HC22	14 - 22mm
N494	HC25	17 - 25mm
N495	HC30	22 - 30mm
N496	HC35	25 - 35mm
N497	HC45	35 - 45mm
N499	Assorted	8 - 50mm



Fermod Coldroom Hardware



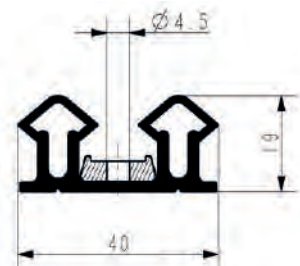
CODE	TYPE	DESCRIPTION	IMAGE N°
N907		Fermod 920 Handle	1
N908		Fermod 921 Handle (Locking)	2
N940		Fermod 920/921 Strike (27/42mm Strike 47mm Deep)	3
N931		Fermod 920/921 Strike (52/72mm Strike 82mm Deep)	4
N934		Fermod 1220E Door Handle* (Non Locking)	5
N935		Fermod 1221E Door Handle* (Locking)	5
N933		Fermod 1220 Strike	6
N966		Fermod 1220/1221 Block	7
N952		Fermod 556 Hinge	8
N968		Fermod 920/921 Internal Unlocking Device (Complete)	9
N975		Fermod 920/921 Green Cap Only) for Unlocking Device	10

* Please specify which side your door hinges are fitted when ordering the 1220 or 1221 handles.
Right hand hinged door = left hand handle. : Left hand hinged door = Right Hand handle.

Fermod N° 67 Coldroom Door Gasket

Extremely soft black EPDM soft rubber for temperatures down to - 45°. Price is per meter and cut to customers specified length. Does not include Fermod 252 central fixing plastic strip.

CODE	DESCRIPTION
N979	Fermod No 67 Black EPDM Coldroom Door Gasket



This page displays a small selection of the Fermod products available, please contact FSW if you require Fermod products, other than those listed above.

PVC Strip Curtains

Made to Measure - S/Steel Hook-On PVC Strip Curtains

We offer a made to measure ordering service on PVC Strip curtain that feature a stainless steel hanging hook rail. Available up to maximum height of 5 metres, and come in 2 specifications as follows:

Polar Grade Material:

Perfect for both chiller and low temperature applications. EEC, Scandinavia, and USA Food & Drugs approved for contact with food.

Standard Grade Material:

Available for non-food contact suitable for both internal and external use. To obtain a quote please tell us if it's a polar or standard grade curtain you require and supply the door width and height (actual opening). Curtains will be provided with sufficient overlap on each side and the top.

Prices we quote are for PVC strips 200mm x 2mm thick with partial overlap (50%) and the s/steel hook-on track.

Please state if you need face or under lintel fixing.

Curtains can be supplied over 5m high but will come with aluminium bolt-on hanging system.



The red PVC, edge marker strips shown in above image, can be supplied on request.

Ready-Made Polar Grade Hook on PVC Strip Curtain (1m Wide x 2m High x 2mm Thick)

We now stock the most popular size polar grade chiller and freezer coldroom curtain ready made. Set contains 1 x 984 wide s/steel hook on track (surface mounted) and 6 x 200mm wide x 2m high x 2mm thick strip curtains allowing for a 50% overlap.

We also stock the individual strips complete with fitted s/steel clamp plate & eyelets and the 984mm wide s/steel hook-on track should you want to buy replacements or make up your own size curtain.



CODE	DESCRIPTION
N225	Ready - Made Polar Grade PVC Curtain with S/Steel Header 1m wide x 2m high x 2mm thick (exact width is 984mm)
N220	S/Steel Hook-On Coldroom Curtain Track (984mm Long)
N221	Single Ready - Made Polar Grade PVC Strip only c/w s/steel eyelet clamp plate (200mm wide x 2m drop x 2mm thick)

Replacement PVC Strip Material

We supply replacement PVC Strip in both standard and polar grade curtains cut by the metre. Strips are 200mm wide x 2mm thick.

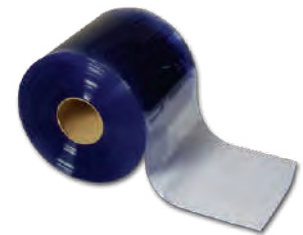


CODE	DESCRIPTION
N210	Standard Grade PVC Curtain supplied by the Metre
N212	Polar Grade PVC Strip supplied by the Metre

Replacement PVC Strip Material on 50m Roll

50 metre roll of PVC Strip 200mm wide x 2mm thick, polar grade only.

CODE	DESCRIPTION
N218	Polar Grade PVC Strip on a 50 metre Continuous Roll



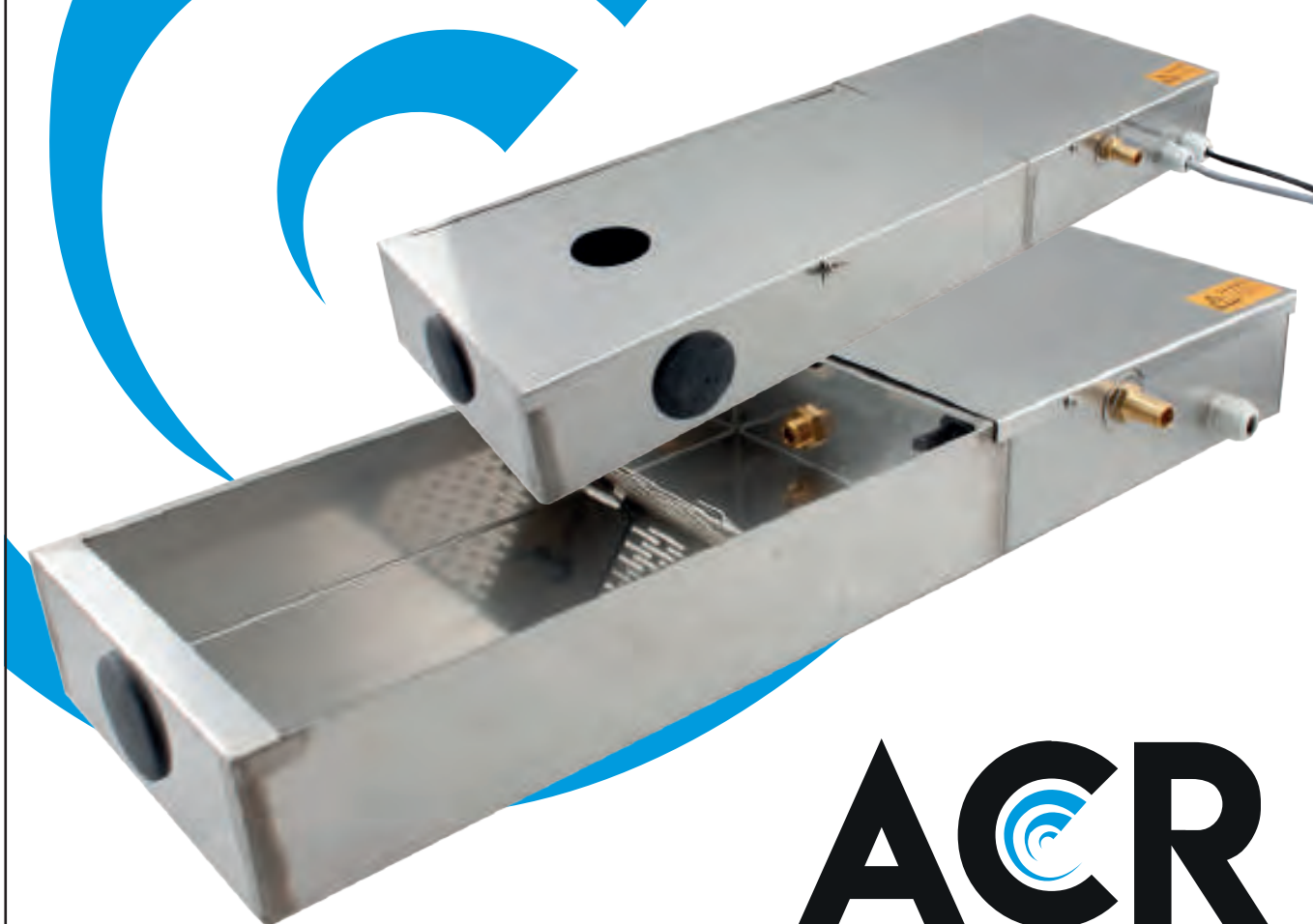
Magnetic Door Gasket Material

Grey magnetic door gasket for commercial refrigerators and freezers. Supplied in a 3m length.

CODE	DESCRIPTION
N036	MG-1 Magnetic Gasket x 3m length



REFRIGERATION DISPLAY CASE PUMPS



ACR
supplies

- UV Pump 'Biofilm Killer'
- Wall Mounted Coldroom Pump
- Pump & Drainage Solution Package*

*Package includes pump, drain connector, hose and adjustable pipe support.

By using this solution your install becomes BSEN12056 compliant. You also significantly decrease the chances of a faulty pump on site.